

Retail For Lease

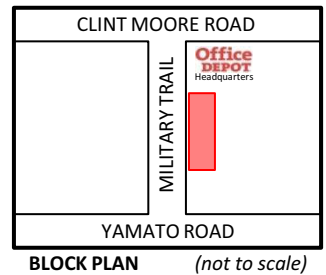
Palm Beach County

PARK PLACE, 5540-5580 N. Military Trail, Boca Raton, FL 33496

Limited Availability
 Last chance to join...
 The Fresh Market & many
 other exciting retailers!



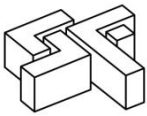
TRAFFIC COUNTS	
(Vehicles per Day)	
Clint Moore Rd	- 27,719
Military Trail	- 41,903
Yamato Rd	- 47,121
<i>Provided By: Palm Beach County Traffic Division 2015</i>	



Leasing Information

Location	16 acre new retail development site on Military Trail, north of Yamato Rd & South of Clint Moore Rd.				
Availability	In-line	1,572 - 4,323 SF			
	Outparcel "D"	2,226 - 7,226 SF			
Property Amenities	<ul style="list-style-type: none"> • 64,000 SF Retail Center with excellent frontage and three access points on Military Trail • Services extended trade areas of Boca Raton & Delray Beach • Zoning: PMD 				
Area Highlights	<ul style="list-style-type: none"> • Located between the world headquarters of Office Depot with over 2,300 employees and a new residential development consisting of approximately 400 apartment units. • Close proximity to Lynn University with approx. 1,800 students, Boca Raton Executive Airport, Florida Atlantic University with approx. 25,800 students and strong residential demographics. • Almost 96,000 Daytime Employees within a 3 mile radius. 				
Parking	Spaces: Approx. 700 spaces - 10 / 1,000 SF				
Demographics		<u>1-mile</u>	<u>2-miles</u>	<u>3-miles</u>	<u>5-miles</u>
	Population (2015 estimate):	4,133	19,451	68,494	226,427
	Population (2020 projected):	4,405	20,572	72,216	239,427
	Daytime Population:	17,067	42,244	96,202	174,439
	# of Households	2,006	7,910	30,112	107,722
	Average Income:	\$122,091	\$129,423	\$102,269	\$83,910
	Median Income:	\$89,191	\$95,117	\$68,407	\$53,805

Ross Feurring / Broker
 RossFeurring@sfrealty.com
 561-488-9100



PARK PLACE

SITE PLAN



Not to scale. Sizes & configuration subject to change.

ELEVATIONS

5540 N. Military Tr. (Bldg "A") 20,000 SF

5550 N. Military Tr. (Bldg "B")

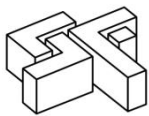
9,500 SF



5560 N. Military Tr. (Bldg "C")

20,638 SF





Retail For Lease

AVAILABLE SPACE

5540 N. Military Trail (Bldg "A") 20,000 SF

Bay #	Bay Dimensions	Bay Size	Status
100	161 x 120	20,000	Leased - The Fresh Market

5550 N. Military Trail (Bldg "B") 9,500 SF

Bay #	Approximate Bay Dimensions	Bay Size	Status
200/202	40 x 50	2,000	Leased - Sprint
204	20 x 50	1,000	Leased - Eileen Fisher
206	20 x 50	1,000	
208	20 x 50	1,000	
210	20 x 50	1,000	
212	19.83 x 50	1,000	
214/216	40 x 62.5	2,500	Leased - Fresh Kitchen

5560 N. Military Trail (Bldg "C") 20,638 SF

Bay #	Approximate Bay Dimensions	Bay Size	Status
300/302/304	67.18 x 64	4,428	Leased - Rappy's Deli
306/308	50 x 60	3,002	Leased - Venetian Nail Spa
310	21 x 60	1,260	Leased - Raw Juce
312	21 x 60	1,260	Leased - PheNOMeNOM Ice Cream
314/316	40 x 60	2,400	Leased - Chipotle Mexican Grill
318	21 x 65.5	1,375	AVAILABLE
320	21 x 65.5	1,376	AVAILABLE
322	23.67 x 65.5	1,572	AVAILABLE
324	20.82 x 65.5	1,343	Leased - The Cheese Course
326/328	40 x 65.5	2,620	Leased - The Habit Burger Grill

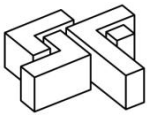
5570 N. Military Trail (Bldg "D") 7,226 SF

Bay #	Approximate Bldg Dimensions	Bldg Size	Status
400	30.8 x 72.26	2,226	AVAILABLE
402	69.19 x 72.26	5,000	AVAILABLE

5580 N. Military Trail (Bldg "E") 6,650 SF

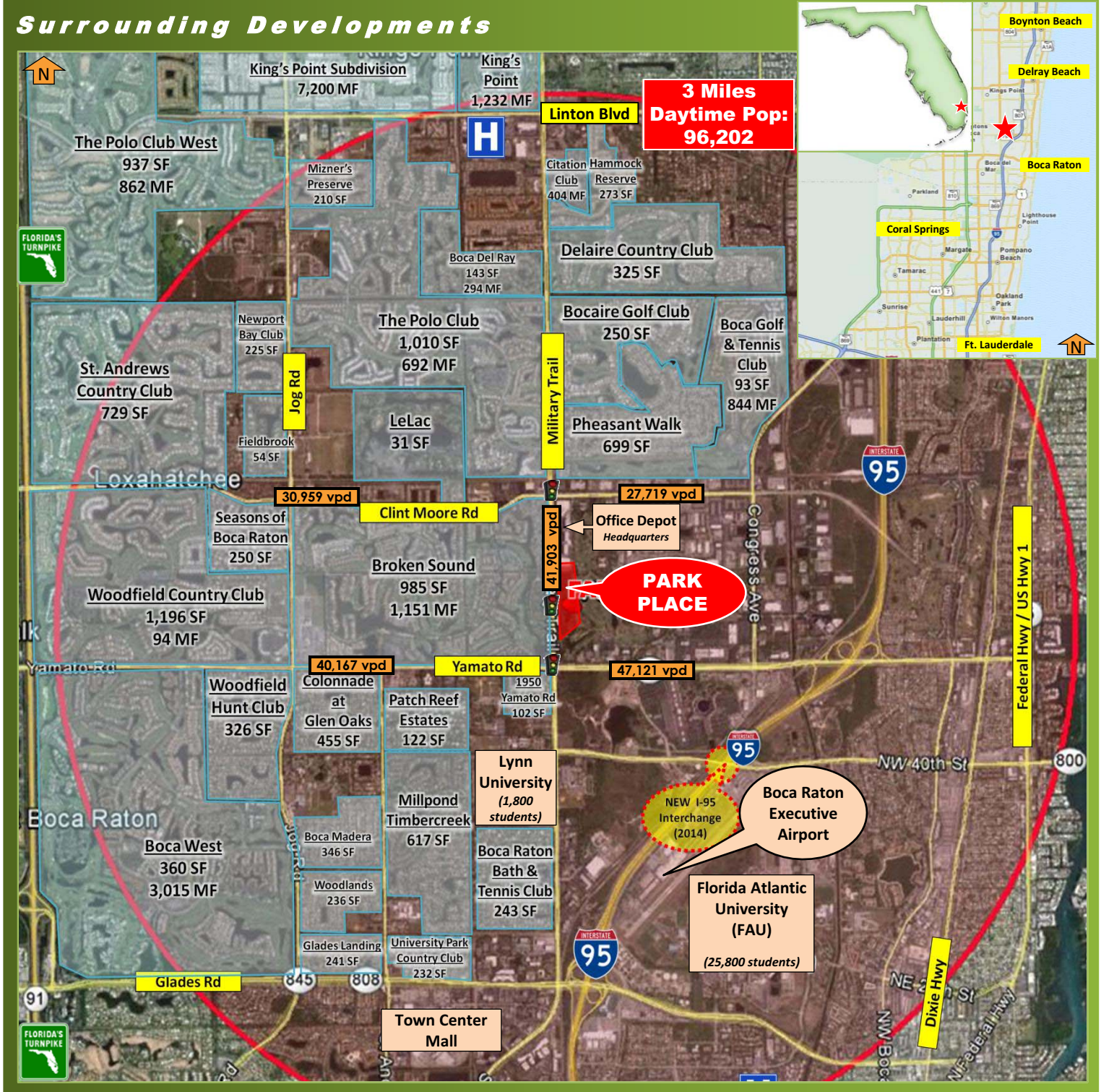
Bay #	Approximate Bldg Dimensions	Bldg Size	Status
500	66.5 x 100	6,650	Leased - Burtons Grill & Bar

Sizes & configuration subject to change.



Retail For Lease Palm Beach County

PARK PLACE, 5540-5580 N. Military Trail, Boca Raton, FL 33496



2015 Traffic Counts provided by Palm Beach County Traffic Division

2200 Butts Road, Suite 300, Boca Raton, FL 33431 Fax 561-482-0181 www.sfrealty.com

Ross Feurring / Broker
RossFeurring@sfrealty.com
561-488-9100